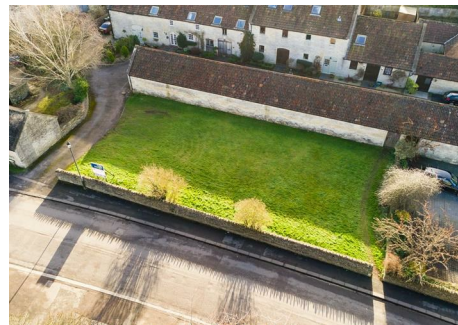
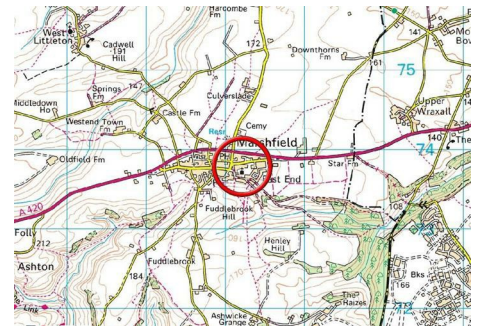
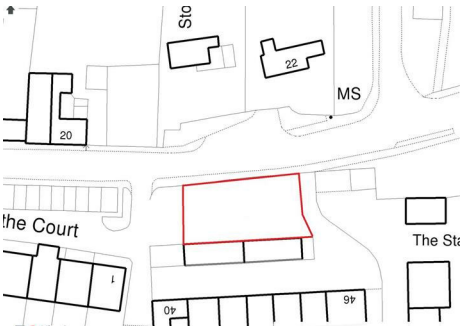




0117 973 6565  
 www.hollismorgan.co.uk  
 post@hollismorgan.co.uk

hollis  
 morgan  
 auction



## Parcel of Land, Hay Street, Marshfield, Wiltshire, SN14 8NL

Auction Guide Price £10,000 +++

Hollis Morgan APRIL AUCTION - A small Freehold PARCEL OF LAND in this popular VILLAGE - range of uses subject to CONSENTS.

# Parcel of Land, Hay Street, Marshfield, Wiltshire, SN14 8NL

## FOR SALE BY AUCTION

\*\*\* SOLD PRIOR TO AUCTION \*\*\*

LOT NUMBER 37

Wednesday 11th April 2018

All Saints Church Pembroke Road, Clifton, Bristol BS8 2HY

Legal packs will be available for inspection from 18:00.

The sale will begin promptly at 19:00

## VIEWING

The land is open for external viewing at all times.

## SOLICITORS

Sharon Lee

VWV

Narrow Quay House

Narrow Quay

Bristol

BS1 4QA

Tel: 0117 925 2020

## ONLINE LEGAL PACKS

Digital Copies of the Online legal pack can be downloaded Free of Charge.

Please visit the Hollis Morgan Website and select the chosen lot from our Current Auction List.

Follow the RED link to "Download Legal Packs" For the first visit you will be required to register simply with your email and a password.

Having set up your account you can download legal packs or if they are not yet available they will automatically be sent to you when we receive them.

You will be automatically updated by email if any new information is added.

\*\*\* STAY UPDATED \*\*\* By registering for the legal pack we can ensure you are kept updated on any changes to this Lot in the build up to the sale.

## THE LAND

A Freehold parcel of land retained by the developer of the "Home Farm" development to the rear of the plot and now surplus to requirements.

## LOCATION

Marshfield is a highly sought after village approximately eight miles north of Bath and also benefitting from easy access to Bristol and Chippenham either via the A420 or the M4 Motorway. The unspoilt High Street is made up of predominantly period homes and essential amenities such as central stores, post office, butchers, Sweetapples tea room, newsagents and a pretty furniture and design shop. There is a popular primary school which was re-built just a few years ago and a choice of public houses as well as the village church and GP's surgery.

## THE OPPORTUNITY

RANGE OF USES / POTENTIAL - SUBJECT TO CONSENTS

The plot is currently an attractive grassed area but has the potential to be an additional garden, parking area or a possible development site (subject to obtaining any necessary consents).

We understand that the land has previously had planning permission refused for development and buyers must make their own investigations.

## BUYER'S PREMIUM

Please be aware all purchasers are subject to a £1000 + VAT (£1,200 inc VAT) buyer's premium which is ALWAYS payable upon exchange of contracts whether the sale is concluded before, during or after the auction date.

## GUIDE PRICE

An indication of the seller's current minimum acceptable price at auction. The guide price or range of guide prices is given to assist consumers in deciding whether or not to pursue a purchase. It is usual, but not always the case, that a provisional reserve range is agreed between the seller and the auctioneer at the start of marketing. As the reserve is not fixed at this stage and can be adjusted by the seller at any time up to the day of the auction in the light of interest shown during the marketing period, a guide price is issued. This guide price can be shown in the form of a minimum and maximum price range within which an acceptable sale price (reserve) would fall, or as a single price figure within 10% of which the minimum acceptable price (reserve) would fall. A guide price is different to a reserve price (see separate definition). Both the guide price and the reserve price can be subject to change up to and including the day of the auction.

## RESERVE PRICE

The seller's minimum acceptable price at auction and the figure below which the auctioneer cannot sell. The reserve price is not disclosed and remains confidential between the seller and the auctioneer. Both the guide price and the reserve price can be subject to change up to and including the day of the auction.

## PRE AUCTION OFFERS

Some properties may be available to buy prior to the auction.

Pre auction offers can be only submitted by completing the OFFER FORM which can be downloaded with the online legal pack - please email the COMPLETED form to – [olly@hollismorgan.co.uk](mailto:olly@hollismorgan.co.uk).

Please note offers will not be considered until you have VIEWED the property and the COMPLETE LEGAL PACK has been released.

# Parcel of Land, Hay Street, Marshfield, Wiltshire, SN14 8NL

---

In the event of an offer being accepted the property will only be removed from the auction and viewings stopped once contracts have successfully EXCHANGED subject to the standard auction terms and payment of the buyer's premium ( £1,200 ) to Hollis Morgan. Contracts can be signed either via the solicitors or at the Hollis Morgan offices subject to appointment.

## **SURVEYS AND VALUATIONS**

If you would like to arrange a survey or mortgage valuation of this Lot BEFORE the auction please instruct your appointed surveyor to contact Hollis Morgan and we will arrange access for them to inspect the property. Please note that buyers CANNOT attend the surveys and the surveyors are responsible for collecting and returning keys to the Hollis Morgan offices in Clifton.

## **BIDDING AT THE AUCTION**

This property is for sale by public auction and if you intend to bid please bring the following:

Proof of identity (valid passport or photo driving licence).  
Proof of address (bank statement, recent utility bill, council tax bill or tenancy agreement).  
10% deposit payment.  
Buyers premium payment.  
Details of your solicitor.

## **PAYING THE DEPOSIT & BUYERS PREMIUM**

We can only accept the following at the auction:

Personal or Company Cheque  
Bankers Draft  
Debit Card ( NOT CREDIT CARD )

## **TELEPHONE AND PROXY BIDDING**

If you cannot attend the auction (although we strongly advise you do) you can make a TELEPHONE or PROXY BID. This authorises the auctioneer to bid on your behalf up to a pre-set limit. Forms and relevant conditions are available to download with the online legal pack. A completed form, ID and two cheques (one for the 10% deposit and one for the Buyer's Administration Fee of £1,200) are required by the Auction Department at least two full working days before the auction.

## **AUCTION BUYERS GUIDE VIDEO**

We have short video guides for both buying and selling by Public Auction on the Hollis Morgan Website. If you have any further questions regarding the process please don't hesitate to contact Auction HQ.

## **TESTIMONIALS**

We are very proud of what our past clients have say about us - please visit the Hollis Morgan website to read their testimonials.

## **CHARITY OF THE YEAR**

Hollis Morgan are supporting Bristol charity based Off the Record! as our 2018 charity of the year with 5% of each buyers premium donated to help provide free and confidential mental health support and information to young people aged 11-25 in Bristol - [www.otrbristol.org.uk](http://www.otrbristol.org.uk) In 2017 we were delighted to be involved in raising £30,000 over 3 events for the "Life for a cure" Bristol based meningitis charity - [www.ryanbresnahan.org](http://www.ryanbresnahan.org) Visit the Charity page of our Website for further details - <https://www.hollismorgan.co.uk/charity/>